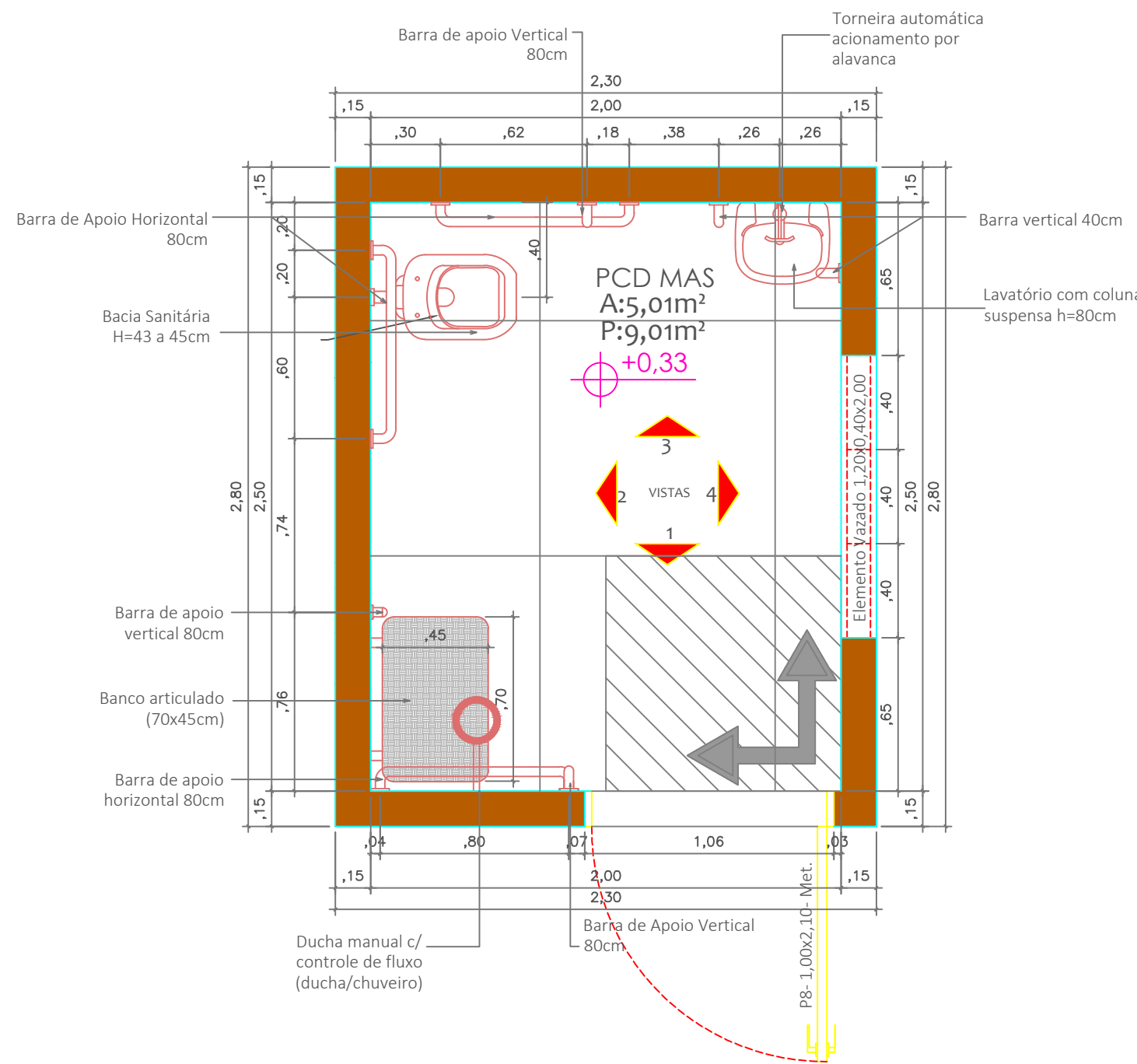
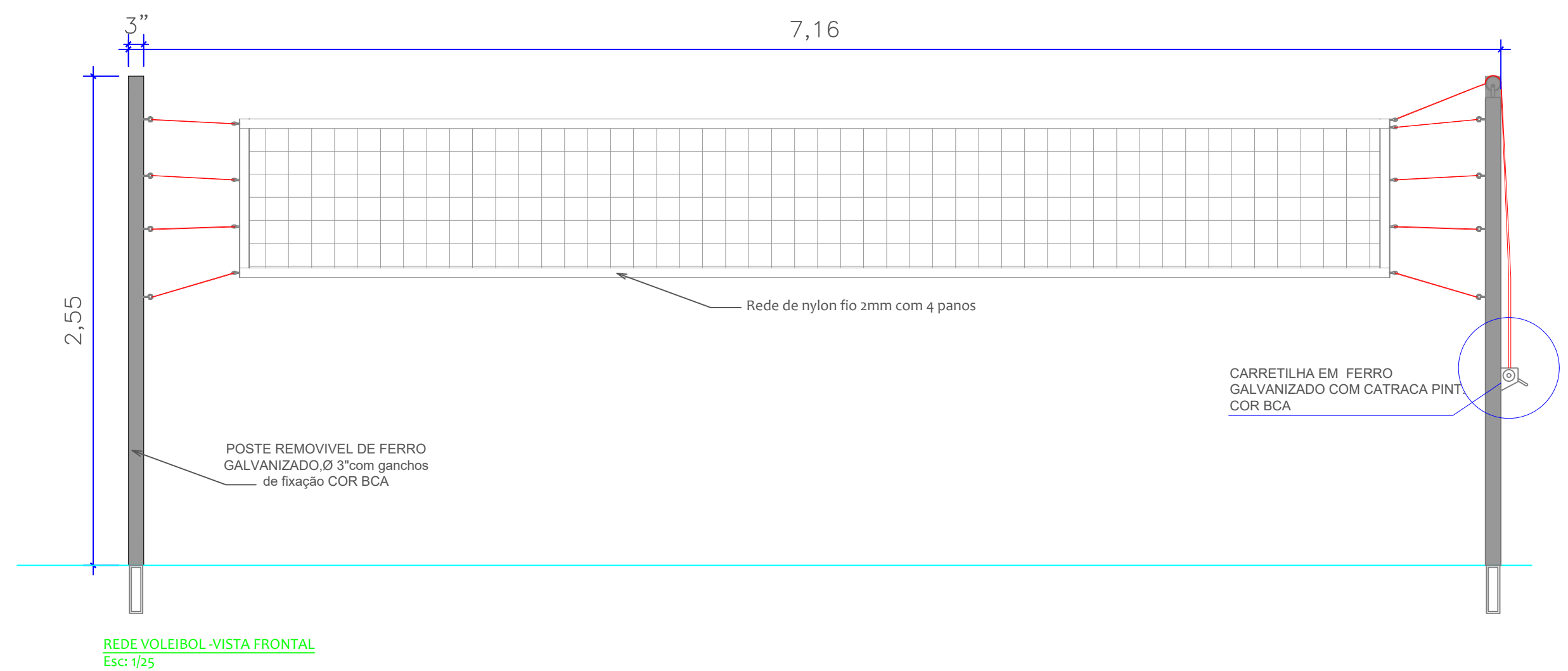


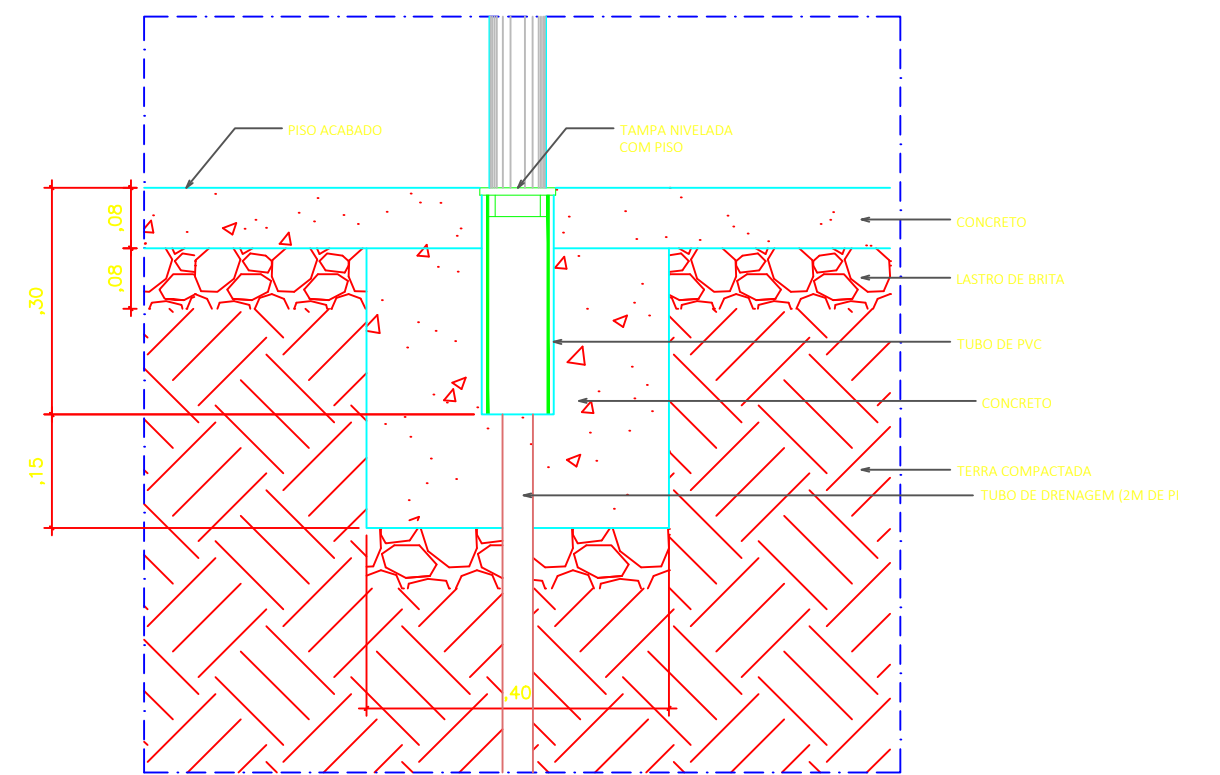
Det. Planta Baixa- PCD Fem
Esc:1/25



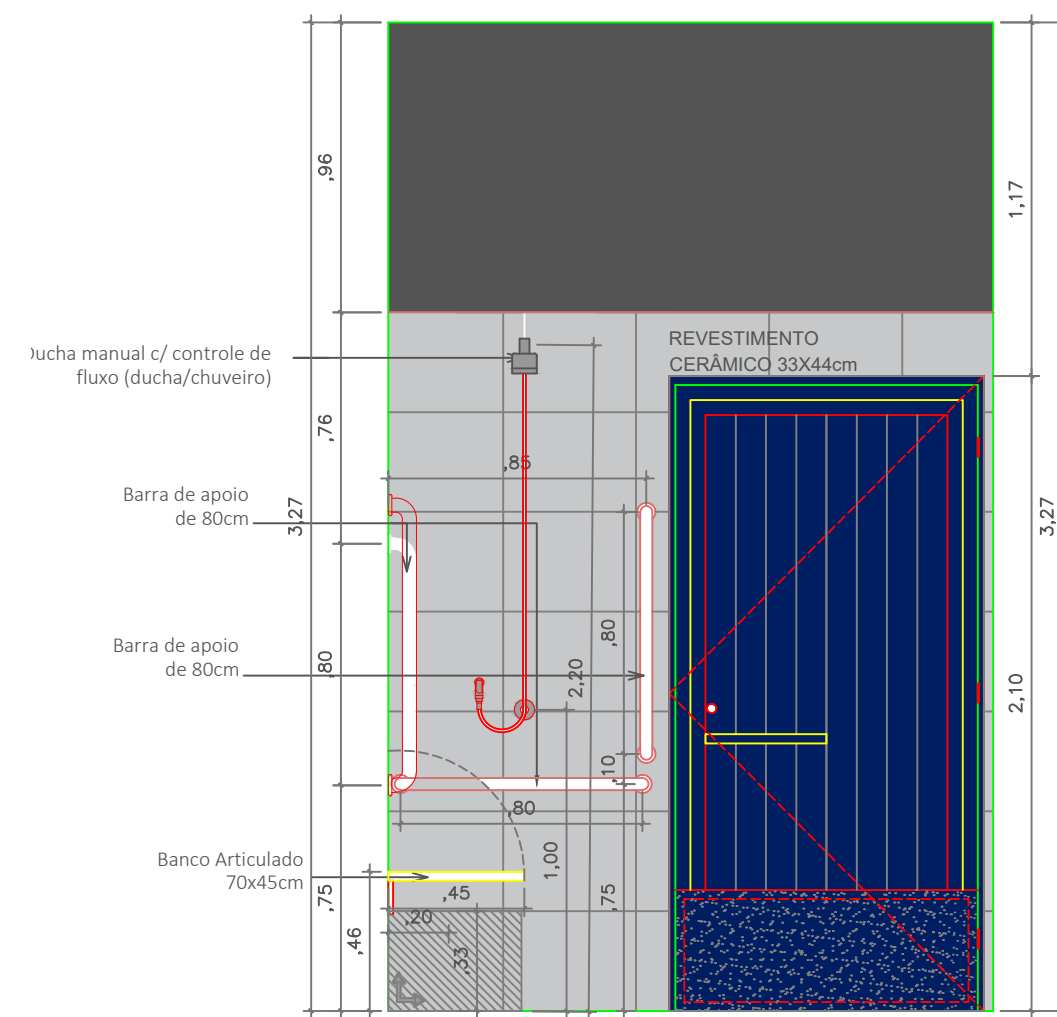
Det. Planta Baixa- PCD Mas
Esc:1/25



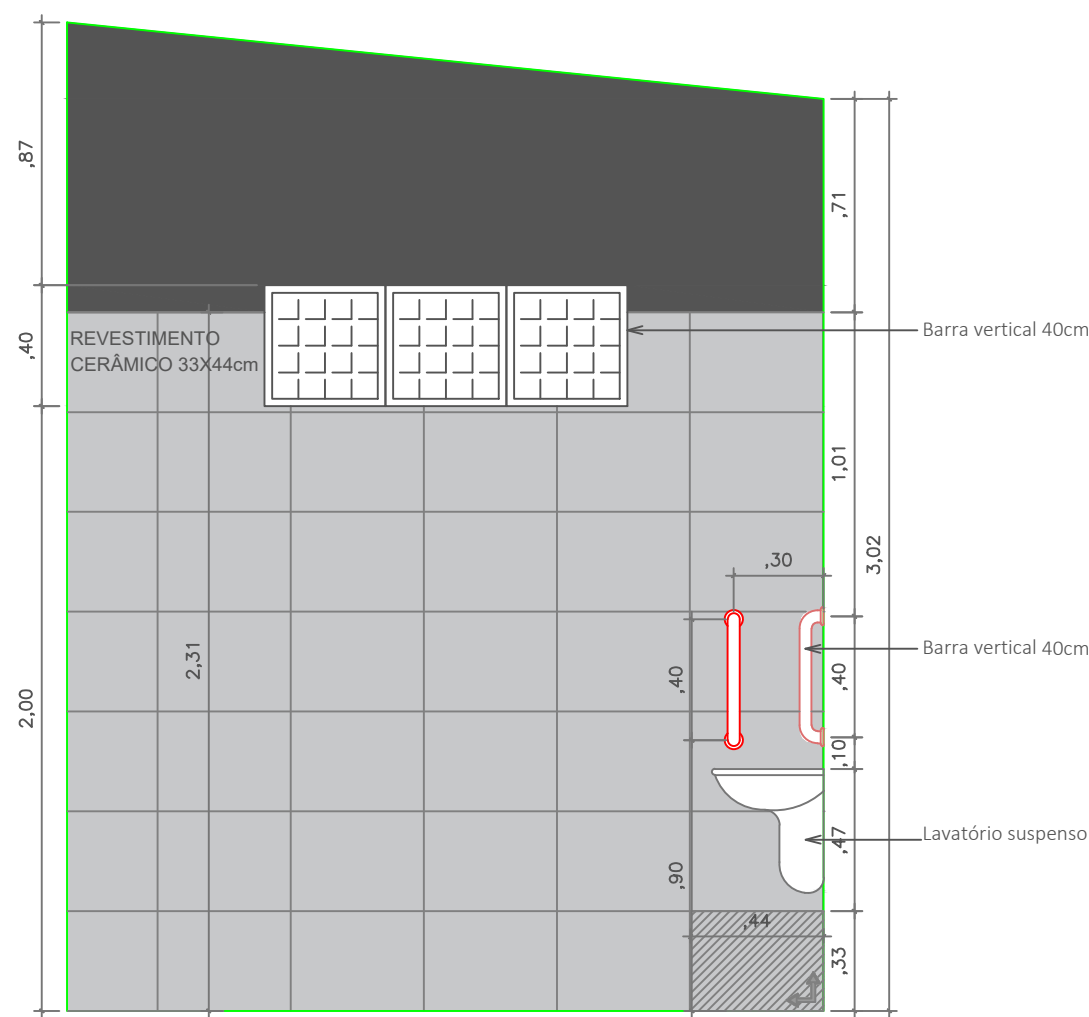
REDE VOLEIBOL-VISTA FRONTAL
Esc:1/25



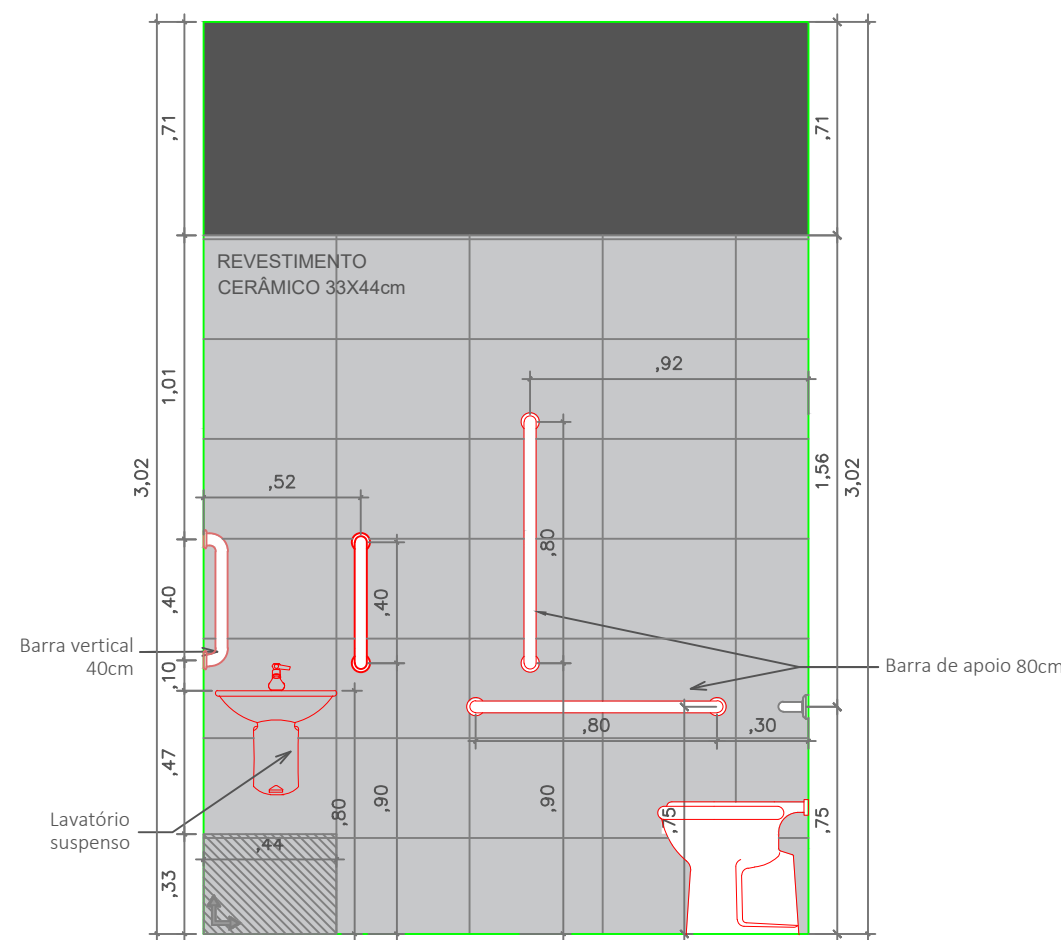
DETALHE 01 - SISTEMA DE FIXAÇÃO
Esc: 1/10



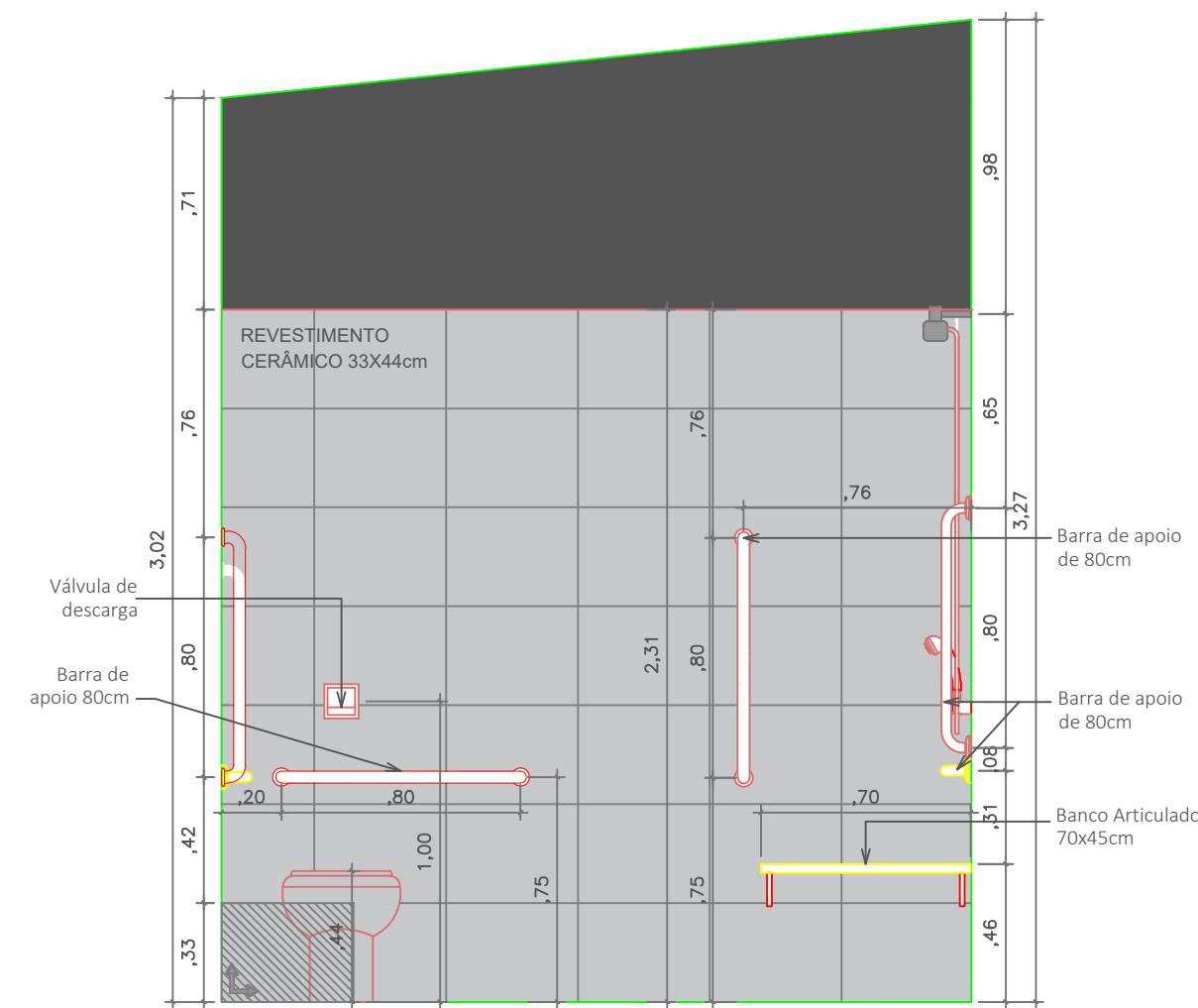
Det. PCD Fem - Vista 1
Esc:1/25



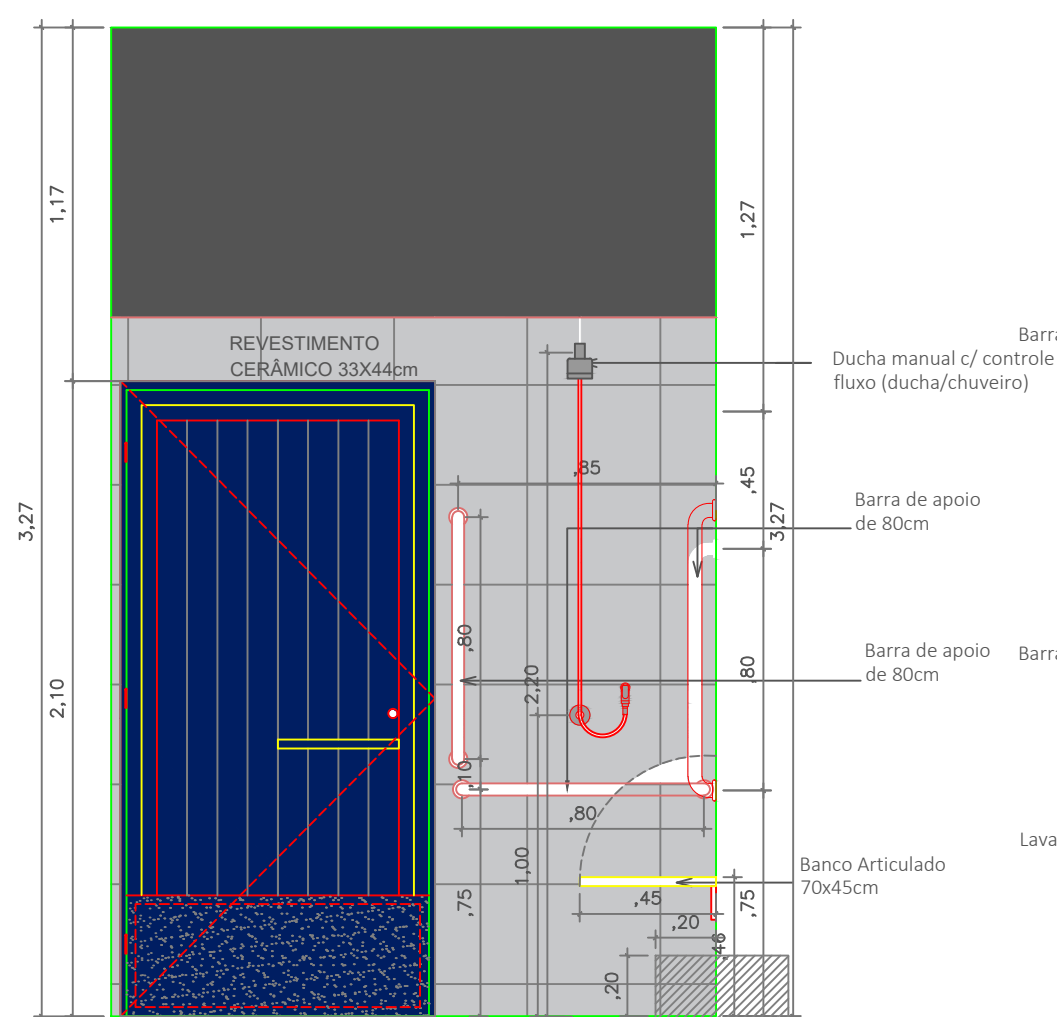
Det. PCD Fem - Vista 2
Esc:1/25



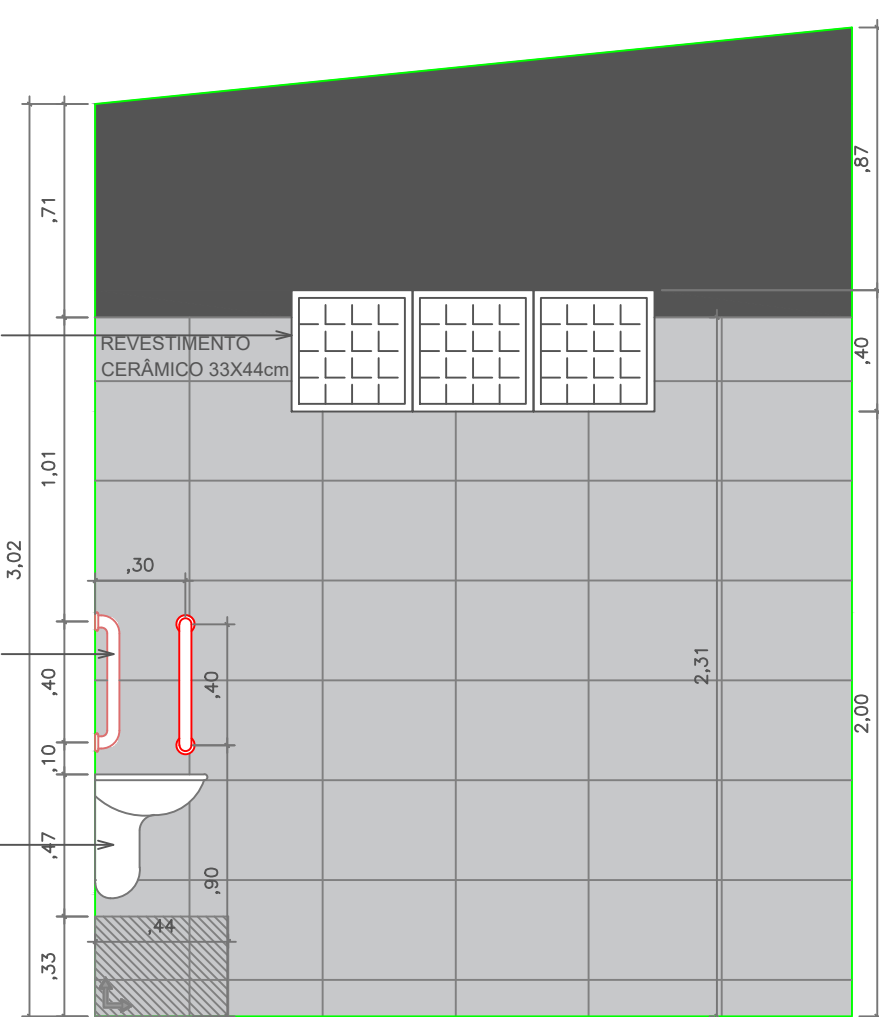
Det. PCD Fem - Vista 3
Esc:1/25



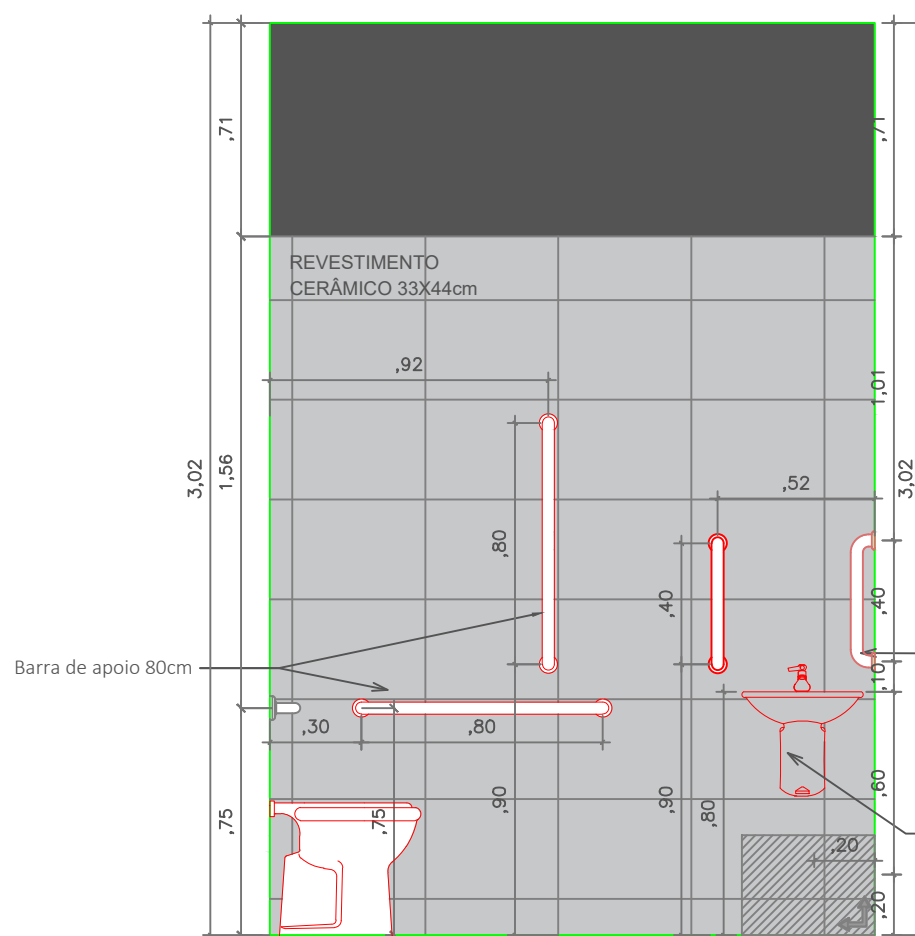
Det. PCD Fem - Vista 4
Esc:1/25



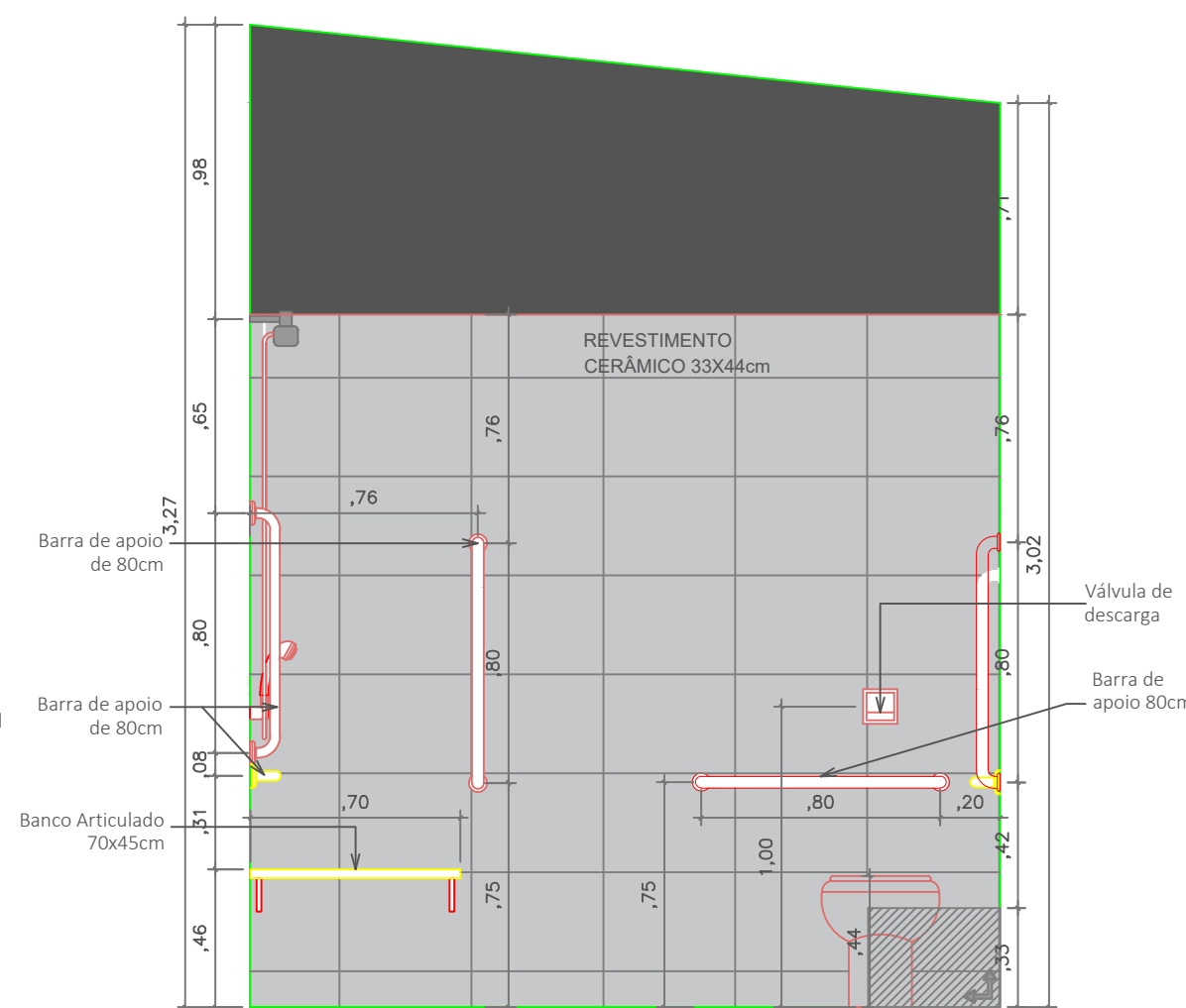
Det. PCD Fem - Vista 1
Esc:1/25



Det. PCD Fem - Vista 2
Esc:1/25



Det. PCD Fem - Vista 3
Esc:1/25



Det. PCD Fem - Vista 4
Esc:1/25

<div><div><div>SEDUC Secretaria de Estado de Educação</div><div></div><div><div>PREFEITURA DIAMANTINO Cidade Mãe Helena</div></div></div></div>		<h2>PROJETO ARQUITETÔNICO</h2>	
OBRA:		ESCOLA ESTADUAL DECIO FURIGO	
PROPRIETÁRIO: CPF/ CNPJ:		PREFEITURA MUNICIPAL DE DIAMANTINO CNPJ - 03648540000174	
ENDEREÇO:		Rua Décio Furigo, esquina com avenida Dorvalino Bruneta, Q 7, lote 11 - Deciolândia - DIAMANTINO-MT	
AUTOR DO PROJETO: CREA/ CAU:		BRUNO RICARDO FREIER LACHMANN CREA-MT 038855	
RESP. P/ EXECUÇÃO: CREA/ CAU:			
ESCALA:	ASSUNTO:	FOLHA Nº:	
INDICADA	DETALHAMENTOS DE AREAS MOLHADAS DOS VESTIÁRIOS PCD FEMININO E MASCULINO, DETALHES EQUIP. ESPORTIVO	ARQ 09/12	